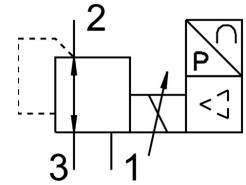


Proportional pressure control valve MPPEs-3-1/8-10-420

Part number: 187349

FESTO



Data sheet

Feature	Value
Nominal width pressurization	3 mm
Exhaust nominal width	2 mm
Type code	MPPEs
Actuation type	Electrical
Sealing principle	Soft
Mounting position	Any
Structural design	Directly controlled piston regulator
Short-circuit protection	For all electrical connections
Safety instructions	MPPEs safety position: if the power supply cable breaks, the outlet pressure will drop to 0 bar.
Symbol	00995305
Reverse polarity protection	for all electrical connections
Valve function	3-way proportional pressure control valve closed
Operating pressure	≤1.2 MPa
Operating pressure	≤12 bar
Pressure regulation range MPa	0 MPa ... 1 MPa
Pressure regulation range	0 bar ... 10 bar
Inlet pressure 1	11 bar ... 12 bar
Inlet pressure 1 MPa	1.1 MPa ... 1.2 MPa
Max. pressure hysteresis	0.001 MPa
Max. pressure hysteresis	0.01 bar
Switching time off	290 ms
On switching time	200 ms
DC operating voltage range	18 V ... 30 V
Residual ripple	10 %
Setpoint/actual values	Current type 4–20 mA
Operating medium	Compressed air as per ISO 8573-1:2010 [7:4:4] Inert gas
Information on operating and pilot media	Operation with oil lubrication possible (required for further use)
Certification	RCM compliance mark
KC characters	KC EMC
CE marking (see declaration of conformity)	As per EU EMC directive
Corrosion resistance class (CRC)	2 - Moderate corrosion stress
LABS conformity	VDMA24364-B2-L
Temperature of medium	0 °C ... 60 °C
Degree of protection	IP65

Feature	Value
Ambient temperature	0 °C ... 50 °C
Product weight	915 g
Electrical connection	8-pin M16x0.75 Plug as per DIN 45326 Round design
Type of mounting	With through-hole
Pneumatic connection 1	G1/8
Pneumatic connection 2	G1/8
Pneumatic connection 3	G1/8
Note on materials	RoHS-compliant
Housing material	Wrought aluminum alloy
Diaphragm material	NBR